



PRIDE
worldcity

BROOKLYN

COME HOME,
YOUR WORLD
IS HERE.



BUILDING TOMORROW. TODAY.

Established in 1995, Pride Group has been transforming cityscapes across **Pune, Mumbai and Bangalore**. This has earned us a clear distinction of being an innovative and a leading development firm in the residential and commercial space. Bold contemporary designs, the highest attention to detail, enviable engineering standards, ethical standards and professional outlook have reinforced the trust associated with the name.

Under the stewardship of Mr. Arvind Jain, Pride Group has built and successfully delivered over **10 million square feet of constructed area** and currently has **over 40 million square feet under construction** across various real estate segments. Apart from successfully setting up Pune's first private Tech Park, Pride has delivered various IT parks and built-to-suit office space projects for multinationals like Oracle, iFlex and the likes with utmost dexterity.

In the pursuit of excellence and with a focus on sustainable construction, Pride Group has won several awards, LEED Platinum certification and a 4-5 star rating by respective government authorities across its projects in recognition of its immaculate planning and quality construction. With 500+ strong workforce, Pride Group continues to create an enhanced global living experience with its premium apartments, villaments, villas and townships by adopting latest design and construction technologies, progressive practices and safety measures. Pride Group is committed to design, develop, construct and market residential and commercial spaces that consistently exceed expectations—Building tomorrow. Today.

Pride Group is also in the luxury hospitality segment with its extensive chain of Pride Hotels across the country.

www.pridegroup.net



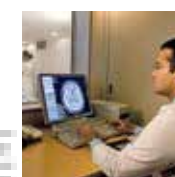
ZRICKS.COM

PRIDE WORLD CITY HIGHLIGHTS

Pride World City aims at bringing the best of all worlds so that you can enjoy a lifestyle that reflects your true global aspirations. Here are a few more reasons* why Pride World City should be your choice of home or work place.



CONVENIENCE SHOPPING



HUB OF EDUCATION



HEALTHCARE

CONVENIENCE SHOPPING

BUS TERMINUS

DAY CARE & PLAY SCHOOL

HIGHER SECONDARY SCHOOL

PLAYGROUNDS

ATM

BUS SHUTTLE SERVICE

WI-FI CITY

FUEL STATION

FIRE STATION

POLICE STATION & POST OFFICE

MULTI-SPECIALITY HOSPITAL

DIAGNOSTIC CENTRES

SERVICE APARTMENTS

BANK

MALL & MULTIPLEX

FIVE STAR HOTEL

DEPARTMENTAL STORES

HIGH STREET SHOPPING

MASTER CLUB

JOGGING TRACK

CYCLING TRACK AROUND THE CITY

BUSINESS & I.T. PARK

TEMPLE

SEZ

WATER BODIES

BOAT CLUB

WATERFRONT RESTAURANTS

MEDITATION PAVILION

OPEN AIR AMPHITHEATRE

CULTURAL CENTRE

ART PROMENADE

*The facilities indicated above would be provided over a period of time based on feasibility and necessary government approvals.



A SPECTACULAR PRELUDE TO YOUR HOME.

So much has been written about the 'first impression'. We made a stunning entrance and a grand lobby to make sure you make the right impression before your guests can meet you. The lobby with its airy, pleasantly lighted ambience is just the place for a quick handshake or a quasi-formal meeting. Together, the entrance and the lobby are an extension of your refined tastes in décor.



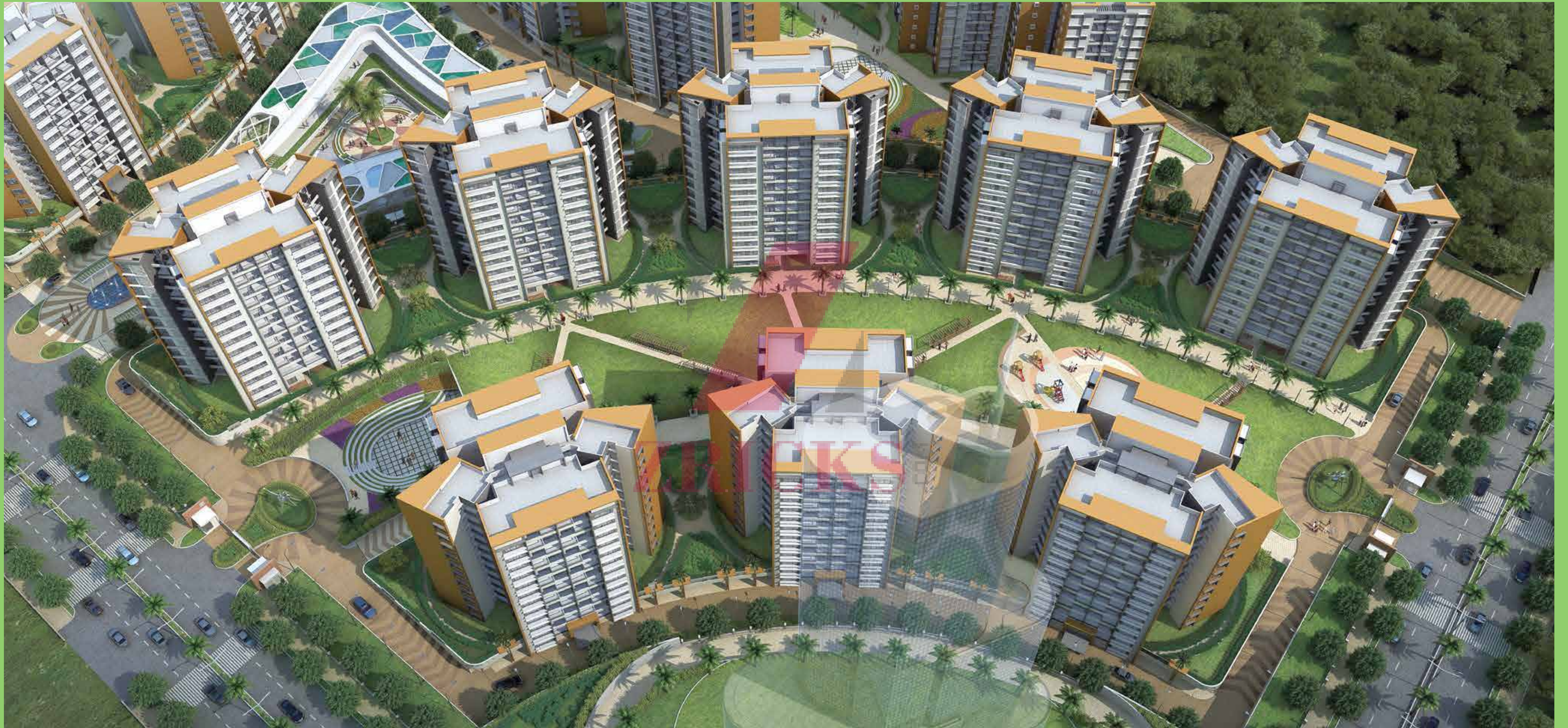
**MAKE EVERY OCCASION FEEL
LIKE SPRINGTIME.**

When it's time to enjoy a special day with your friends, take it outdoors and let the soft green grass and the wide-open spaces be your hosts. Our outdoor spaces are designed to accommodate all your loved ones. Be it a birthday party or that informal brunch, you could host an enviable celebration in our community hall or party lawns.



TODAY'S CHILDHOOD, TOMORROW'S MEMORIES.

Tumbling, tossing, whooping and whirling, your kids' childhood soon becomes a memory. Our children's play areas are designed to build such happy memories. In this safe haven, your children will foster friendships that will last a lifetime.









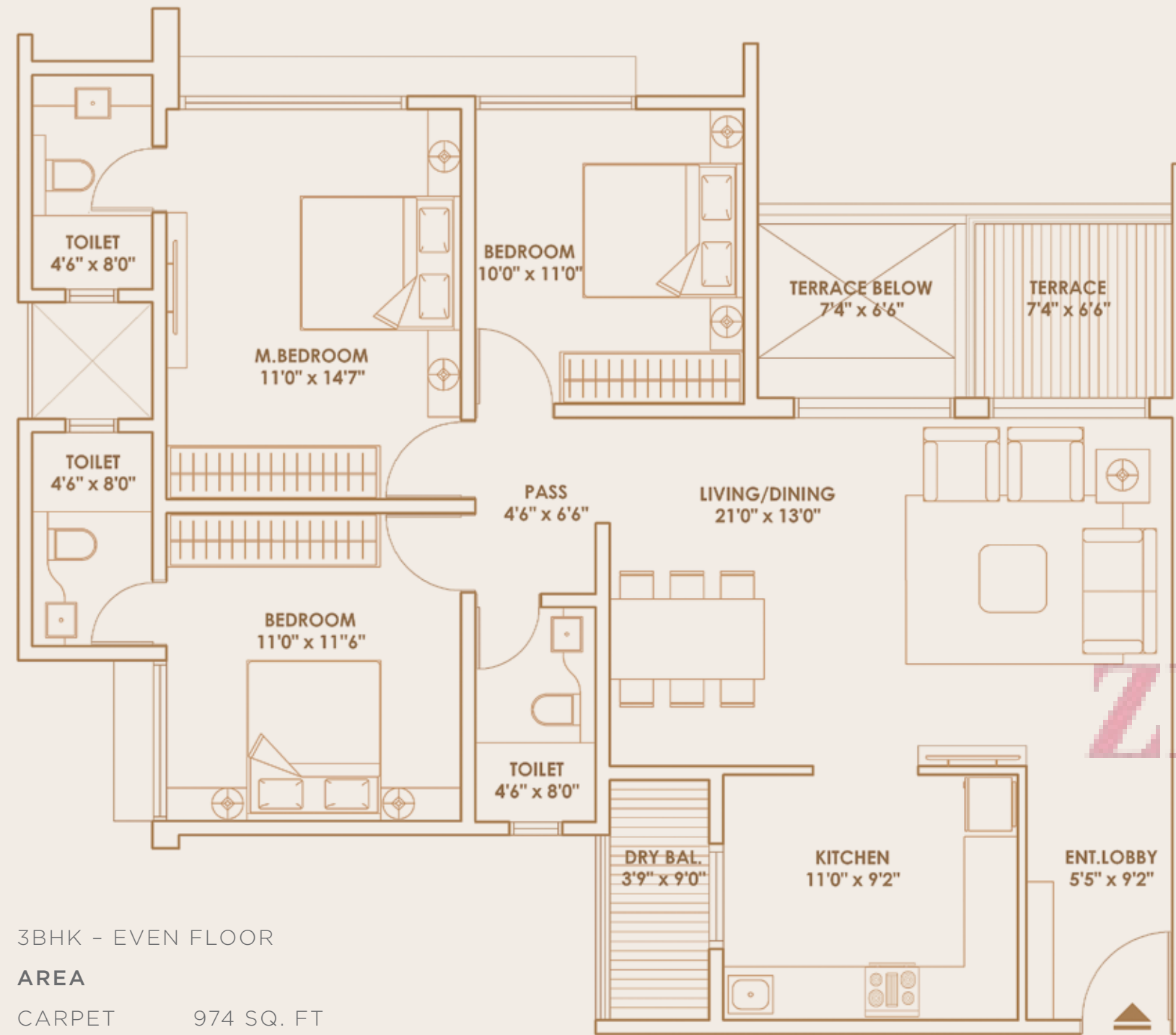
BROOKLYN
A - H

LAYOUT VIEW OF **BROOKLYN**



- AMENITIES**
- 1. COMMUNITY HALL & PARTY LAWN
 - 2. CHILDREN PLAY AREA
 - 3. JOGGING TRACK
 - 4. AMPHITHEATRE

BROOKLYN - 3BHK - EVEN FLOOR PLAN (4TH, 6TH, 10TH, 12TH)

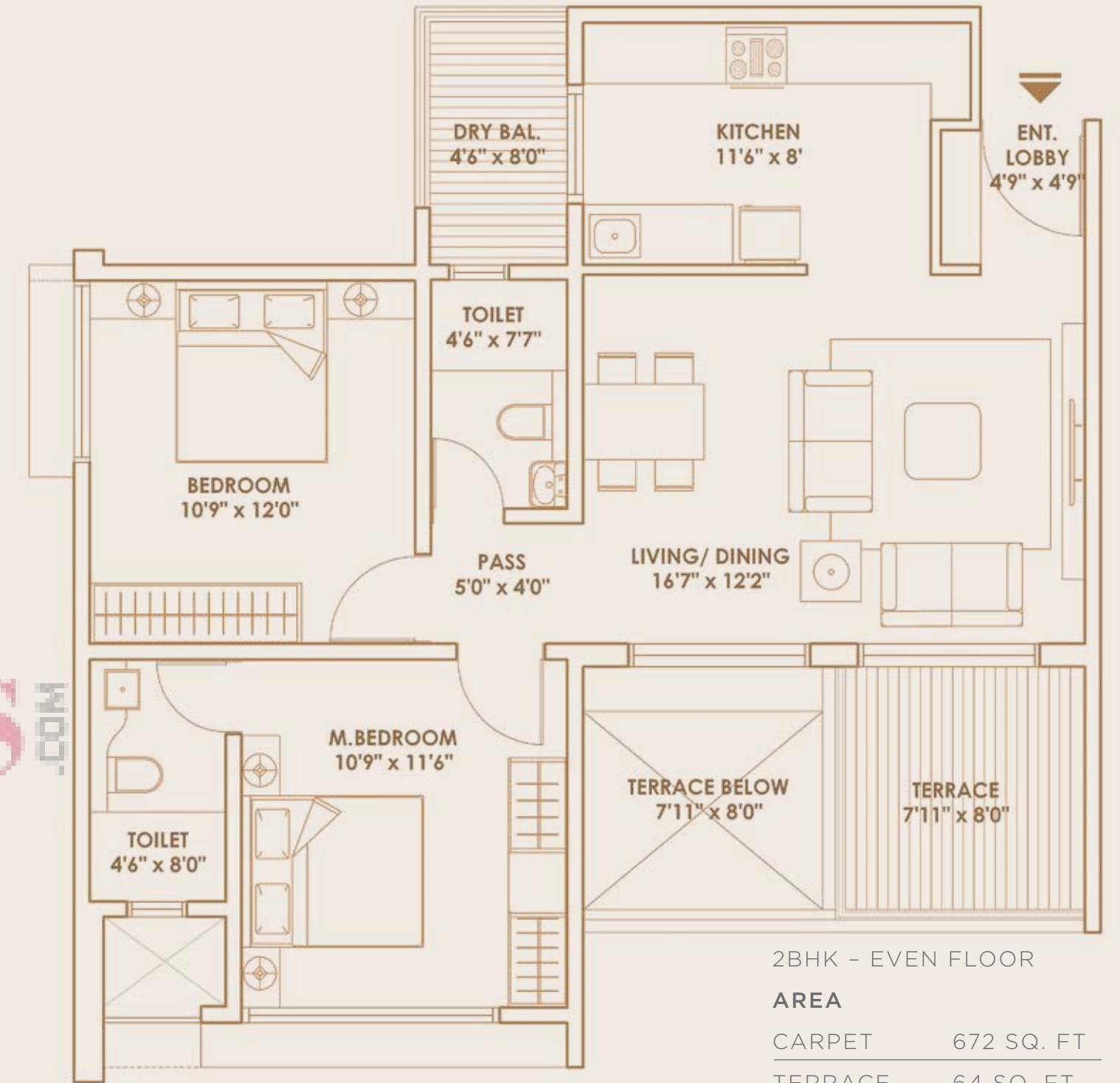


3BHK - EVEN FLOOR

AREA

CARPET	974 SQ. FT
TERRACE	48 SQ. FT
DRY BAL.	33 SQ. FT
SALEABLE	1424 SQ. FT

BROOKLYN - 2BHK - EVEN FLOOR PLAN (4TH, 6TH, 10TH, 12TH)

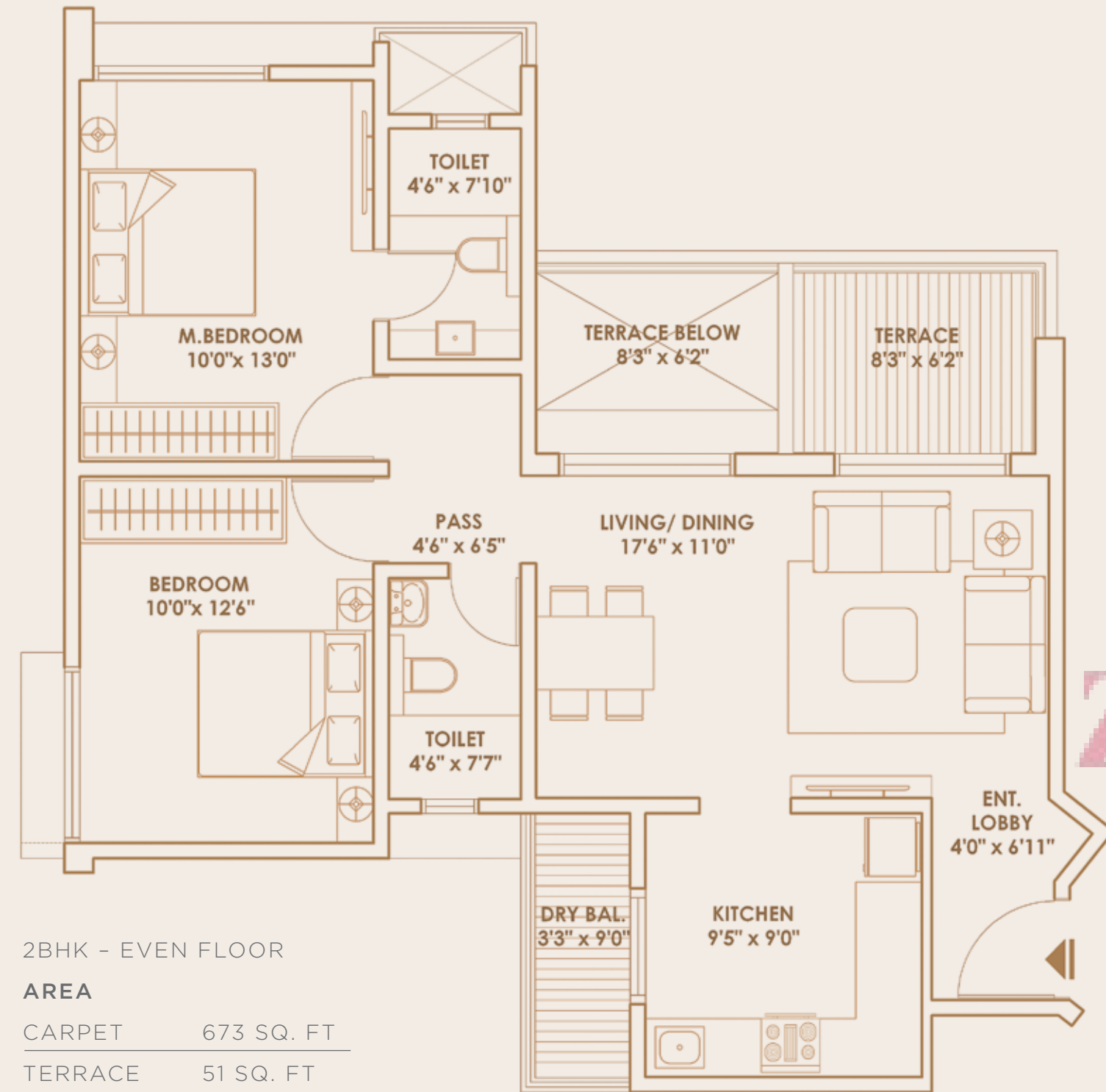


2BHK - EVEN FLOOR

AREA

CARPET	672 SQ. FT
TERRACE	64 SQ. FT
DRY BAL.	36 SQ. FT
SALEABLE	1042 SQ. FT

BROOKLYN - 2BHK - EVEN FLOOR PLAN (4TH, 6TH, 10TH, 12TH)



2BHK - EVEN FLOOR

AREA

CARPET	673 SQ. FT
TERRACE	51 SQ. FT
DRY BAL.	29 SQ. FT
SALEABLE	1017 SQ. FT





SPECIFICATIONS



STRUCTURE

- ENTIRE STRUCTURE WILL BE IN RCC ALU FORM STRUCTURE
- EARTHQUAKE RESISTANT STRUCTURE
- ENTIRE STRUCTURE WILL BE IN HIGH GRADE FE500 STEEL



FLOORING

- 600 x 600 VITRIFIED TILE FLOORING IN ALL ROOMS
- 300 x 300 CERAMIC NON SLIPPERY TILE FLOORING IN TERRACE AND DRY BALCONY
- 75mm HIGH SKIRTING OF VITRIFIED TILES IN ALL ROOMS



TOILETS

- DESIGNER CERAMIC TILE DADO IN BATHROOMS UP TO DOOR TOP LEVEL
- NON SLIPPERY CERAMIC TILE FLOORING IN ALL TOILETS
- JAQUAR / EQUIVALENT BRAND C.P. FITTINGS IN ALL TOILETS
- CERA / SIMPOLO / EQUIVALENT BRAND SANITARY WARE IN ALL TOILETS
- PROVISION FOR HOT AND COLD WATER IN ALL TOILETS FOR SHOWER AND BASIN
- SOLAR WATER PROVISION IN MASTER TOILET
- PROVISION FOR ELECTRIC POINT FOR EXHAUST FAN IN ALL TOILETS
- GRANITE AND WOODEN DOOR FRAME COMBINATION FOR ALL TOILETS



DOORS AND WINDOWS

- MAIN DOOR VENEER POLISH WITH MORTISE LOCK AND HANDLE OF DORMA / DOORSET / EQUIVALENT BRAND
- BOTH SIDE LAMINATED DOORS WITH LAMINATED DOOR FRAMES WITH MORTISE LOCK OF DORMA / DOORSET / EQUIVALENT BRAND
- BOTH SIDE LAMINATED DOOR SHUTTERS WITH CYLINDRICAL LOCKS FOR ALL TOILETS
- ANODISED / POWDER COATED ALUMINIUM WINDOWS WITH MOSQUITO NET PROVISION



ELECTRICAL

- CONCEALED COPPER WIRING IN ENTIRE FLAT
- SCHNEIDER OPALE / ANCHOR ROMA / ELECTRICAL SWITCHES IN ALL FLATS
- PROVISION OF ELECTRIC POINT FOR INVERTER
- PROVISION FOR GYSER, MIXER, FRIDGE, OVEN, WASHING MACHINE AND WATER PURIFIER
- T.V. AND TELEPHONE POINT IN HALL AND MASTER BEDROOM
- PROVISION FOR A.C. POINT IN MASTER AND COMMON BEDROOMS



KITCHEN

- MODULAR KITCHEN PLATFORM WITH S.S. TROLLYS, ELECTRIC CHIMNEY AND HOB
- BLACK GRANITE KITCHEN TOP WITH 2 FEET HEIGHT DESIGNER TILE DADO
- RETICULATED GAS PIPE UP TO KITCHEN HOB
- WATER PURIFIER IN KITCHEN
- VIDEO DOOR PHONE IN EACH FLAT
- PROVISION FOR COMMON DISH ANTENA OF VIDEOCON / EQUIVALENT BRAND FOR EACH FLAT



PAINT

- OIL BOUND DISTEMPER ON INTERNAL WALLS AND CEILING
- OIL PAINT ON M.S GRILLS
- SEMI ACRYLIC PAINT ON EXTERNAL WALLS

AMENITIES

GRAND ENTRANCE LOBBY

COMMUNITY HALL AND PARTY LAWN

CHILDREN'S PLAY AREA

WALKING TRACK

CONVENIENCE SHOPS

RAIN WATER HARVESTING

DG BACKUP FOR COMMON AREAS

ZRICKS.COM

SOME PRIDE PROJECTS

RESIDENTIAL



PRIDE PLATINUM
PUNE



PARK TITANIUM
PUNE



PRIDE PICASSA
BANGALORE

COMMERCIAL



SILICON PLAZA
PUNE



PRIDE ICON
PUNE



PRIDE HULKUL
BANGALORE

CREDITS

ARCHITECTS

Abhikalpan Architects & Planners

STRUCTURAL CONSULTANT

Strudcom Consultants Pvt Ltd

LANDSCAPE CONSULTANT

Abhikalpan Architects & Planners

PHE

Aecom India Private Limited

ELECTRICAL CONSULTANT

Aecom India Private Limited

1. The images and contents of this brochure are purely conceptual and have no legal binding. The developer reserves right to amend, add, alter, delete, change the plans, make improvements in the layout, plans, number of floors, elevation, colour scheme, specifications and amenities, etc. without prior notice or obligation.
2. All the information is prepared and issued in good faith and is for guidance only. It does not constitute part of an offer or contract.
3. Pride World City Logo is a registered trademark owned by Pride Builders LLP. All rights Reserved.
4. The manufacturer of each respective fitting and fixture is accountable for the warranty of the fitting and fixtures and the developer is not liable for the same.
5. The amenities and facilities proposed are not exclusively free. Some of them are paid which shall be disclosed in the agreement.



CORPORATE OFFICE

5th Floor, Pride House, 108, Ganeshkhind Road,

Near Pune University, Pune - 411016

T +91 20 6709 1000

F +91 20 6709 1053

www.pridegroup.net

PRIDE WORLD CITY SITE OFFICE

Adjacent to D.Y. Patil Knowledge City

Charoli Bk, Pune - 412105

T +91 20 3064 7000

www.prideworldcity.com

ZRICKS.COM